

# STALYDENTAL

WHITEN STRAIGHTEN COSMETIC

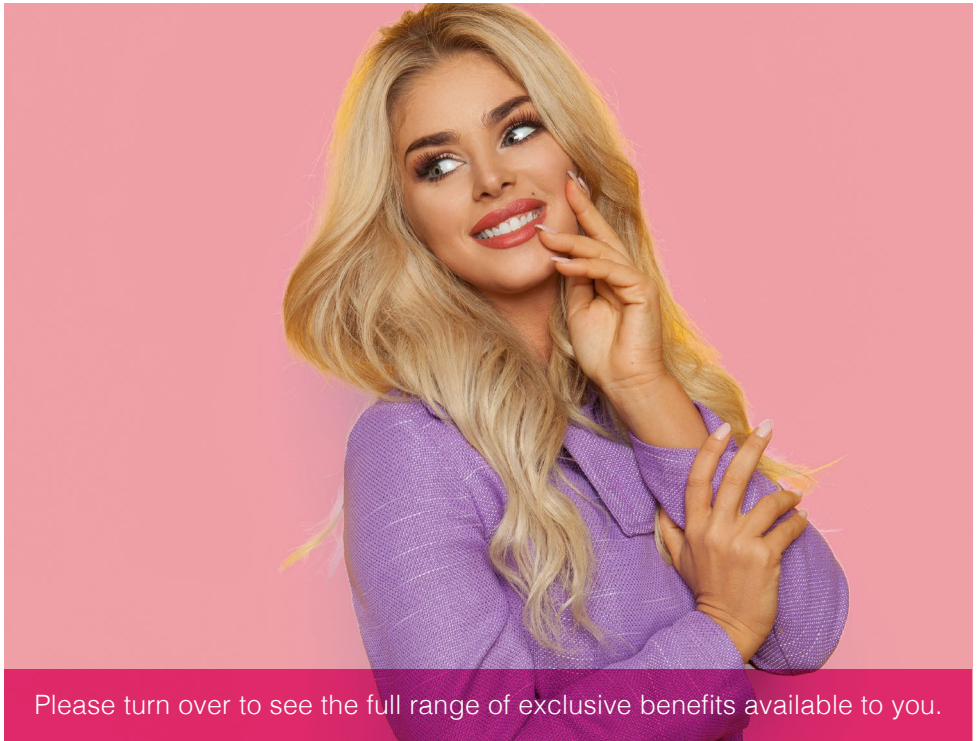
The perfect package to  
improve your dental health  
and maintain your smile!

Pay **£19.95 monthly\*** to  
join our **Adult's Plan!**

**T:** 0161 338 3435

**E:** [info@stalydental.co.uk](mailto:info@stalydental.co.uk)

[www.stalydental.co.uk](http://www.stalydental.co.uk)



Please turn over to see the full range of exclusive benefits available to you.

**Our Adult's Plan** encourages regular attendance, enabling us to spot problems before they arise and results in helping you maintain healthy teeth and gums for life.

## Staly Dental Adult's Plan

2 x dental check-ups per year\*\*

2 x scale and polish per year\*\*

All x-rays clinically necessary

Exclusive 20% **DISCOUNT** on treatments\*\*\*

Eligibility to request assistance from the  
**Worldwide Dental Emergency Assistance Scheme\*\*\*\***

Appointment **PRIORITY!**

**Monthly cost £19.95**

## How do these appointments help you?

**Spread the cost** of your routine dental care through a convenient monthly Direct Debit.

- Clinical examination to catch developing problems early.
- Checking for signs of oral cancer for early detection
- ALL x-rays, where clinically necessary, for an in-depth examination of your oral health.
- Professional removal of harmful hard plaque.
- Advice and techniques – we work with you to prevent tooth decay and gum disease.
- Fresher breath and a brighter smile for improved self-esteem.

We believe this is the complete package to maintain your oral health. We recommend joining to help reduce the risk of expensive restorative treatment in the future.

**Please speak to any member of the team if you would like more information or for details on how to register.**

\* An initial administration fee of £9.50 will be collected with your first payment only.

\*\* The provision of dental check-ups and scale and polish is subject to receipt of the required consecutive monthly payments.

\*\*\* Exclusions apply.

\*\*\*\* Documentation relating to our Privacy Notice and the Worldwide Dental Emergency Assistance Scheme, including assistance levels, limitations and exclusions is available to view online at <https://scheme.wdeas.co.uk/patients>